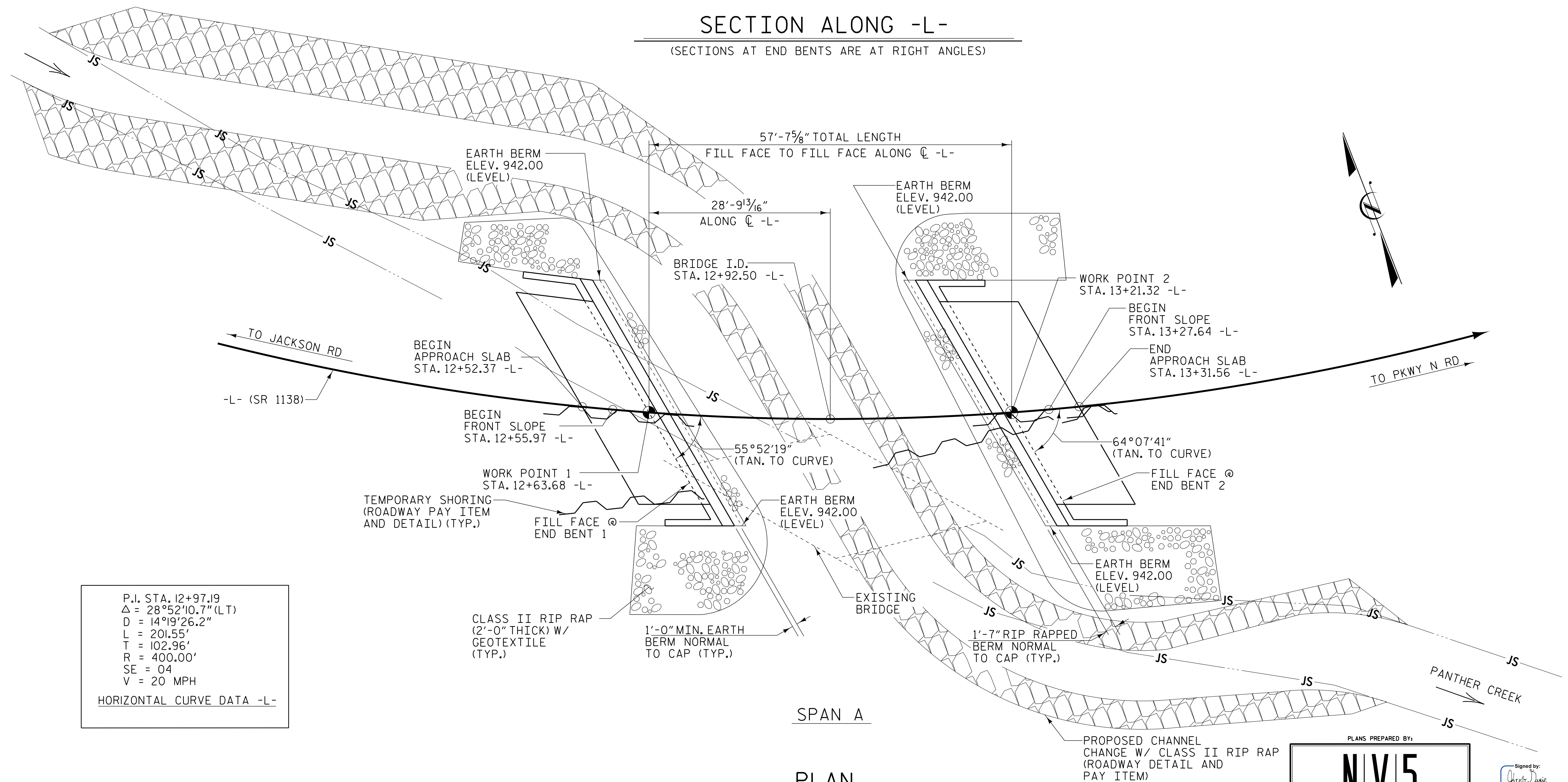


DESIGN DISCHARGE -	750 CFS
FREQUENCY OF DESIGN DISCHARGE -	25 YEAR
DESIGN HIGH WATER ELEVATION -	945.9
DRAINAGE AREA -	2.0 SQ. MI.
BASE DISCHARGE (Q 100) -	1100 CFS
BASE HIGH WATER ELEVATION -	946.3

OVERTOPPING DISCHARGE - 2165 CFS
 FREQUENCY OF OVERTOPPING FLOOD - >500 YEAR
 OVERTOPPING FLOOD ELEVATION - 948.5
 (OVERTOPPING @ STA.13+30 -L-)

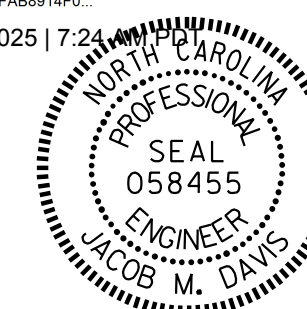
(SECTIONS AT END BENTS ARE AT RIGHT ANGLES)



(NOTE: PILES NOT SHOWN FOR CLARITY)

NV5 ENGINEERS & CONSULTANTS, INC.
3300 REGENCY PARKWAY, SUITE 100
CARY, NC 27518
P: 919.851.1912 www.NV5.com
NC License # E-1333

10/16/2025 | 7:24



PROJECT NO. BP14.R006
POLK COUNTY
 STATION: 12+92.50 -L-

SHEET 1 OF 5 REPLACES BRIDGE NO. 740143

STATE OF NORTH CAROLINA
DEPARTMENT OF TRANSPORTATION
RALEIGH

GENERAL DRAWING
FOR BRIDGE ON -L- (SR 1138)
OVER PANTHER CREEK
BETWEEN JACKSON RD
AND PKWY N RD

REVISIONS						SHEET NO. S-1
NO.	BY:	DATE:	NO.	BY:	DATE:	
1			3			TOTAL SHEETS 20
2			4			

DRAWN BY :	J. M. DAVIS	DATE :	4/23
CHECKED BY :	R. C. LARSON	DATE :	4/23
DESIGN ENGINEER OF RECORD:	R. C. LARSON	DATE :	3/24

**DOCUMENT NOT CONSIDERED FINAL
UNLESS ALL SIGNATURES COMPLETED**